

"YELMO" Jeanneau Yachts 54' 2023 5+1 Cab. A/Acond. Watermaker Generador 6kw





# "YELMO" Jeanneau Yachts 54' 2023 5+1 Cab. A/Acond. Watermaker Generador 6kw

## CHARACTERISTICS



Build Year: 2023  
Compulsory Skipper: No  
Base Port: San Antonio Nautical Club  
Air Conditioning: Yes  
Watermaker: Yes  
Generator: Yes  
Maximum Capacity.: 12Pax  
Cabins: 5+1  
Convertible Saloon: Yes  
Toilets: 3  
Lenght/Beam/Draft: 16,16M/4,92M/2,24M  
Engine: 1x80 CV  
Fuel/Water: 240L/724L  
Plate/Reg.No.: ---

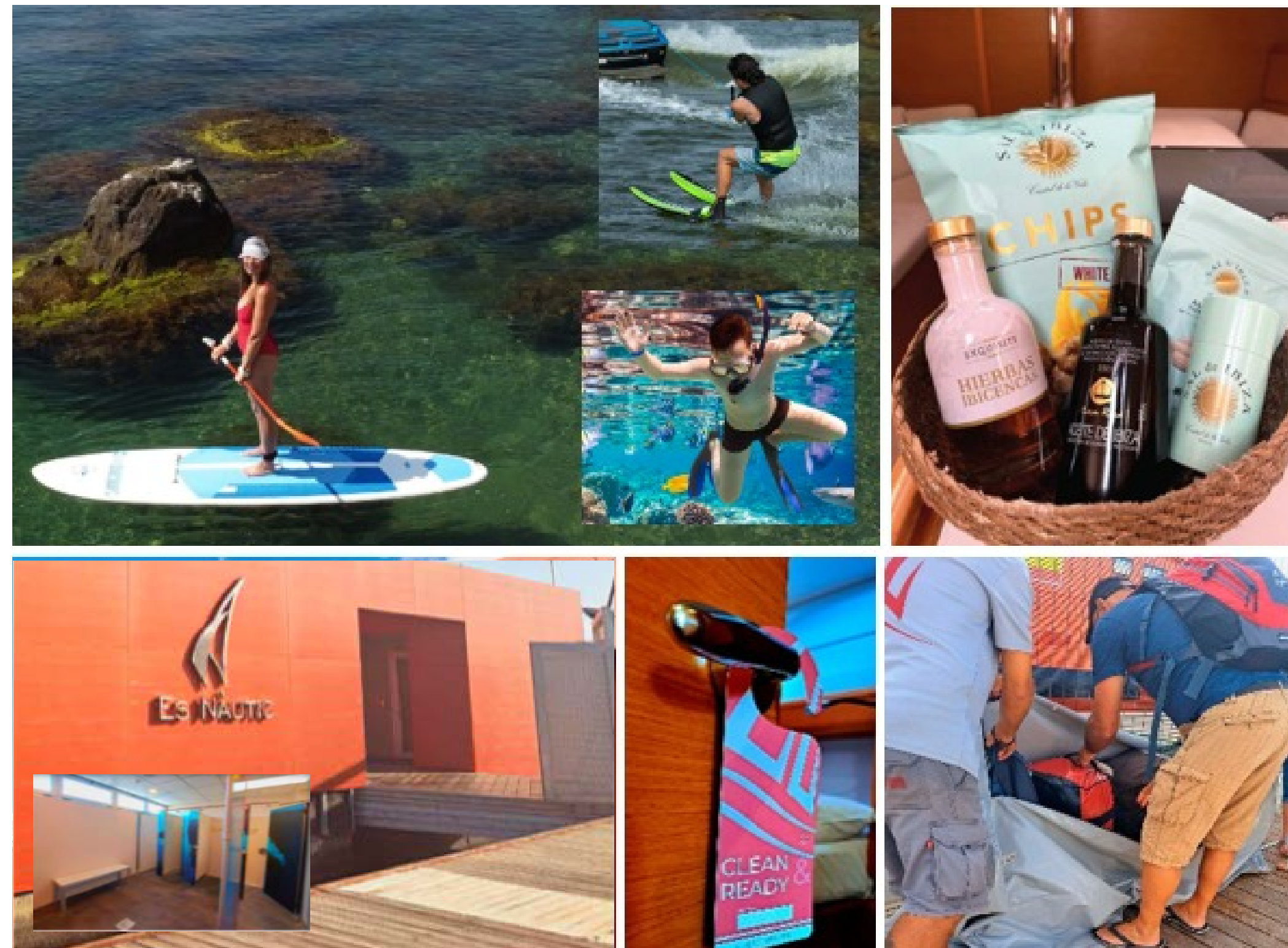


## 5\* STARS CHARTER SERVICE

Transfer Service from/to airport.  
Direct entry with car/taxi to the pontoon  
Luggage storage on the pantoon.  
Online food purchase coordination and delivery on the boat's stern just in time of boarding.  
Check-in/check-out invitation on neighbor coffe shop.  
Embarking and disembarking luggage concierge..  
Bathroom and shower services at the marina.  
Parking service for cars.  
Welcome free pack of Ibiza products.

### Week renting of:

Scooter, Paddle Surf, Pack Snorkel, diving mask,  
Wifi on board....







## BOW AND AFT COCKPITS

Bow with safety rail.  
It has flat areas for sunbathing

Aft cockpit with large folding wing table.  
Premium bath cushions.  
Integrated bathing platform.  
Port and starboard helm station.  
Raymerine multifunction display.  
Pilot Raymerine p70s+Calculator ACU400

+Gyroscopic needle.  
Plotter Raymerine.



## SALOON AND CARD TABLE

Premier Finish  
Large dining table surrounded by sofa with  
large storage space and leather cushions.  
Curtains for the side windows and blinds for  
the living room portholes.  
Bosé loudspeakers in living room and  
bathtub

High visibility card table.  
Space for electronics.  
Music system and boat control panel.





## TABLEWARE

### Top Quality

Elegant bed linen

“Luxury Satín 300TC 100% Egyptian Cotton”  
Velvet beach towels and soft, ultra-absorbent  
terry bath towels in large sizes  
160x70 cm, 100% Cotton 540 gr.

Elegant gourmet porcelain tableware  
of the highest quality,  
with extraordinary impact resistance.

Balloon cups, Glasses, Cups, Cutlery,  
cookware set, frying pans, Coffee machine...



## CABINS

- 5 cabins+1 skipper
- 2 double cabins in the bow with 2 bathrooms
- 1 aft double cabin with 150x205 berth
- 1 twin cabin with 2 beds 70x205
- 1 berth cabin on port side
- 1 starboard transverse swim
- 1 skipper cabin with en-suite bathroom

W.C. with hand pump Hand wash  
basin with single lever mixer

Large storage space. Large mirror  
With this distribution the overnight  
capacity amounts to 10 persons.







## KITCHEN AND FRIDGE

3-burner cooker "Luxe" Oven  
and grill  
Extractor hood  
Double sink  
Large worktop  
Bajo armariada para  
estibaUnder locker for stowage

Half-body fridger and freezer  
Fridge in aft cockpit



## WINCHES-MANEUVERS AND DINGHY

Harken brand manual winches  
Roller genoa with traditional sheeting  
Liftable mainsheet with lazy bag  
Neckline with houndstooth

Auxiliary pneumatic AD-260  
With slatted floor.

Very easy handling and good seaworthiness.

Capacity 5PAX.

2,5 hp Brand Outboard Engine

